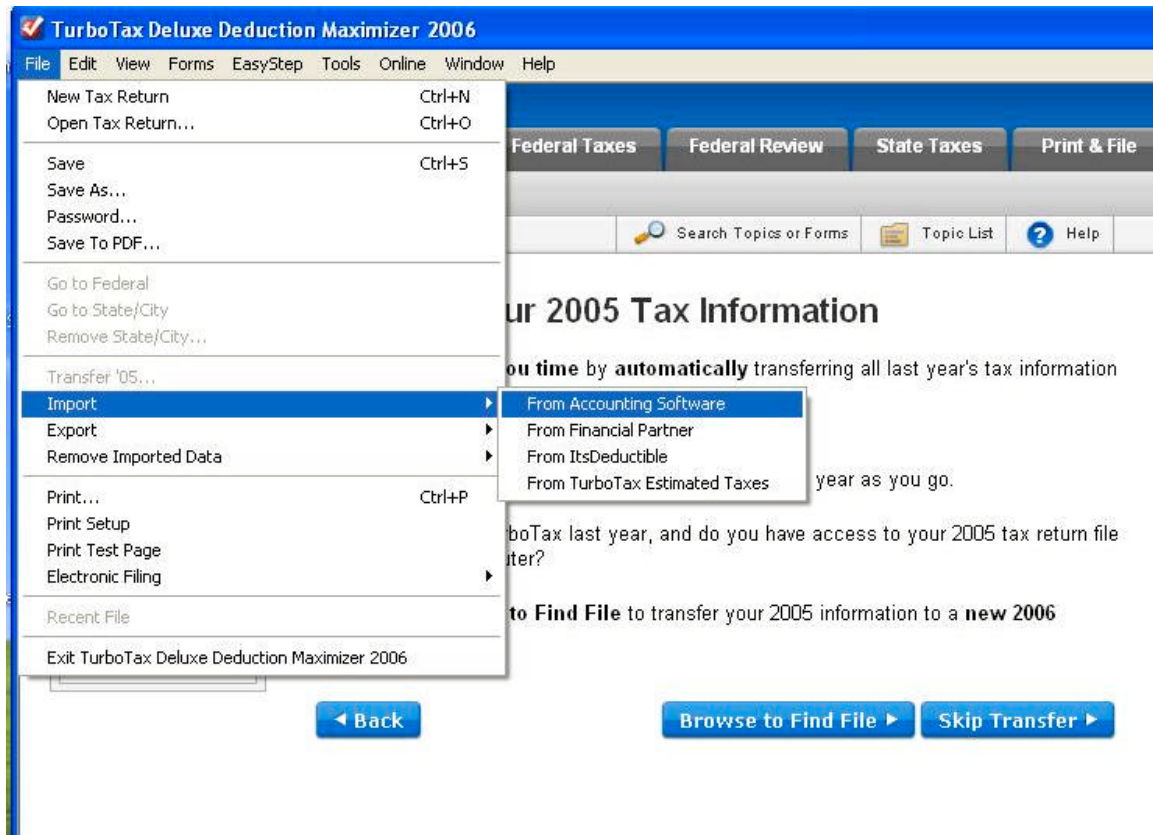
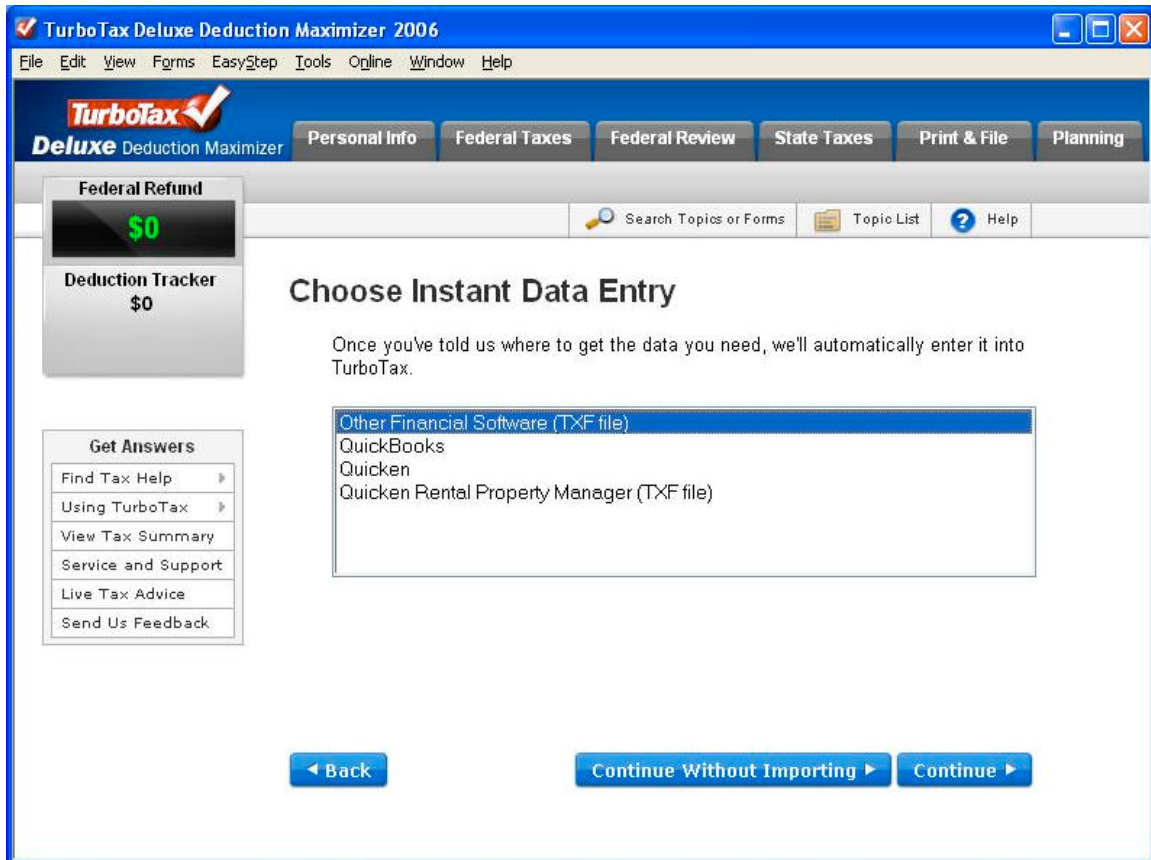


IMPORTING SIMPLY TRACK FILE INTO 2006 TURBOTAX

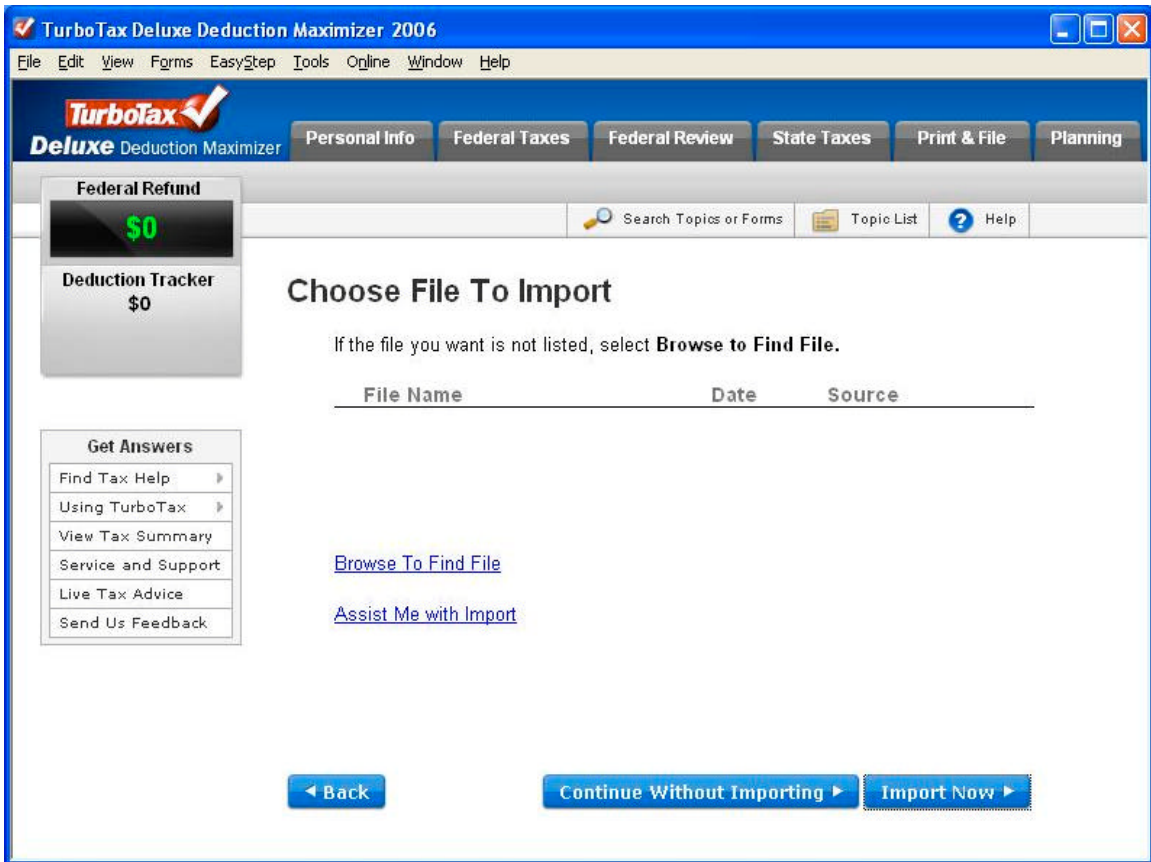
1. Click on File->Export into TXF File on Simply Track Tool, then open TurboTax ,Click on File->New TAX return and then click on file->import->From accounting software



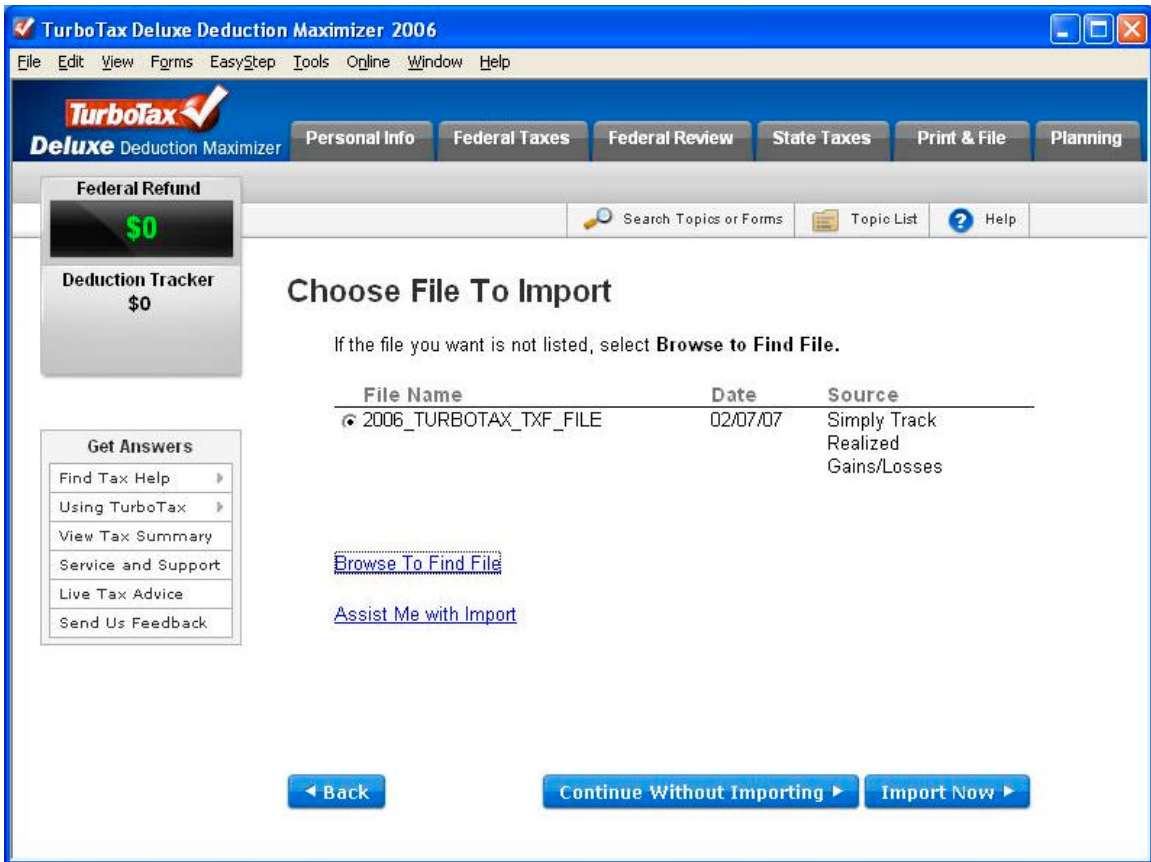
2.



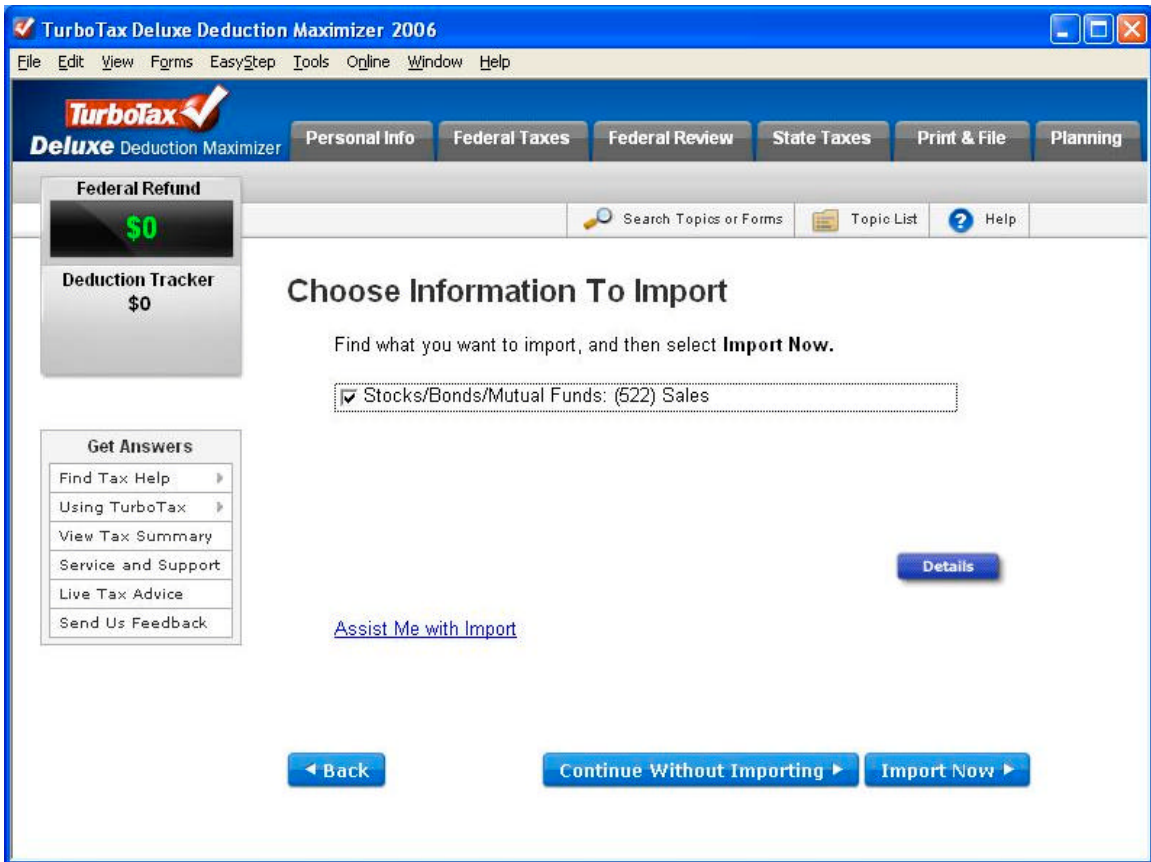
3. Click On Browse to Find and Select Simply Track generated TXF file



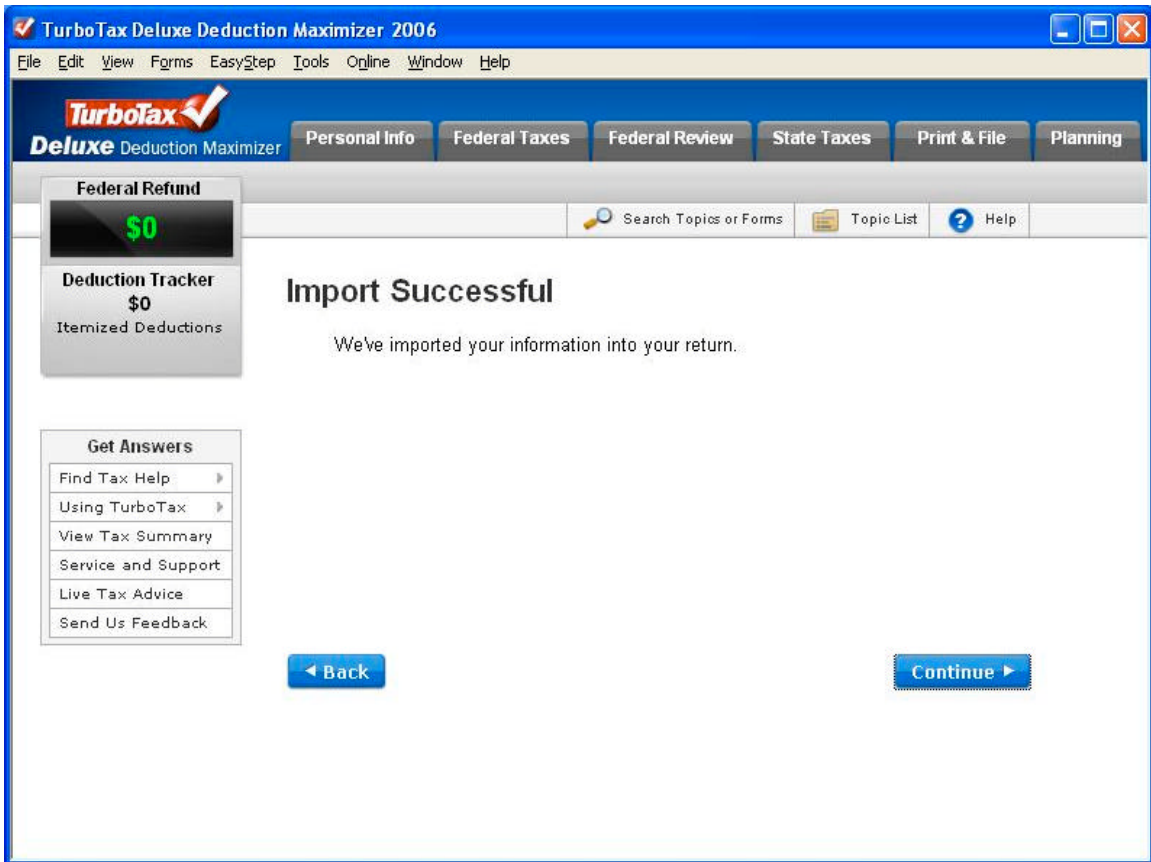
4.



5.



6.



7.

Go to Schedule D1 form and make sure you see the trades .

